

A Message From the Regional Director

Introducing the new Australian Statistician

On 5 March the ABS welcomed the new Australian Statistician, Brian Pink. During the past couple of months Brian has been visiting all the State and Territory Offices and talking with our clients. On 10 May Brian and I met with Pam Davoren, Acting Chief Executive, Chief Minister's Department and Megan Smithies, Acting Chief Executive, ACT Treasury. We discussed a range of issues of importance to the ACT Government including the upcoming Census release. The main focus of the discussion was the *Draft Agreed Statistical Priorities for the ACT Government: An Information Development Plan*. This plan provides a high level strategic framework to develop administrative datasets to advance evidence based policy research in ACT Government.

Population estimates based on the Census 2006

On 5 June 2007, the ABS released preliminary population estimates

for Australia, the states and territories based on the results of the 2006 Census of Population and Housing. Previously published estimates dating back to 30 September 2001 have been revised to take account of this new Census-based population estimates.



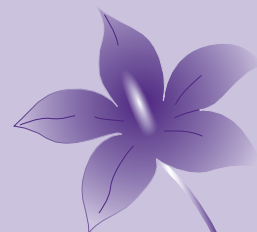
Karen Macdonald

Census 2006 First release of statistics

This month is FIRST RELEASE of Census 2006 data. In this issue of *ABSTRACT* we focus on the Census release and how you can get the most out of the Census data. On 4 July, 2007 at 2pm we'll be hosting a Census 2006 information session at ABS House, Belconnen. Please contact Gemma Wood on 6252 8903 or gemma.wood@abs.gov.au to RSVP.

ACT Government input to better statistics for the Australian community

On 5 June Philip Mitchell, Acting Deputy Chief Executive, Policy, Chief Minister's Department



**Issue 43
June 2007**

In this Issue

The Nation Has a New Australian Statistician **2**

2006 Census Products will be Available on the Web for Free! **3**

What's still to come. . . 2006 Census Products **4**

Publications **5**

The Value of ABS Postings **6**

Mesh blocks – a new way of looking at ABS statistics **7**

Information Consultancy **7**

Forthcoming changes to ABS Labour Force Statistics – Composite Estimation **8**

Population Estimates Based on the 2006 Census of Population and Housing **8**

Expected Major Annual & Irregular Releases **10**

attended the Australian Statistics Advisory Committee (ASAC) meeting as the Territory representative. This followed discussions by representatives from most ACT Government agencies at the Information Development Steering Committee meeting on 31 May. The main role of ASAC is the improvement, extension and coordination of statistical services provided for public purposes in Australia. This includes advising on annual and long-term priorities, programs of ABS work and an increasing role in providing broader advice on Australia's statistical services. Items for discussion at ASAC include the recent review of most of the ABS' surveys to

households, planning options for expansion of statistics in a range of areas including population well being, rural and regional statistics, and environment statistics; enhancing small area data in statistics and improvements in ABS economic data by utilising taxation data.

Changes to ABS Labour Force Statistics – Composite Estimation

Statistics on the Labour Force are released monthly for the ACT. The ABS has introduced an improved method of estimation for the Labour Force Survey (LFS). The new method, known as

composite estimation combines data collected in the previous six months with the current month's data to produce the current month's estimates. The composite estimation method has been introduced with the release of May 2007 labour force statistics on 7 June 2007 in *Labour Force Australia* (cat. no. 6202.0).

Census 2011

And we're well underway planning for the 2011 Census. If you would like to contribute to the process please contact Gemma Wood or myself.

*Karen Macdonald
Regional Director
Australian Bureau of Statistics
karen.macdonald@abs.gov.au*

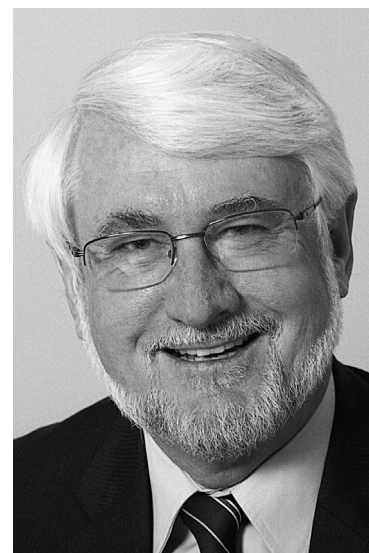
The Nation Has a New Australian Statistician

Dennis Trewin, the Australian Statistician for almost 7 years, retired at the end of 2006. Dennis' tenure as the head of the ABS was both exciting and fruitful with many highlights. These included two successful Censuses and the ABS Centenary of Statistics year in 2005. He led a significant development of Australia's official statistical service and the launch of ABS statistics free on the web.

Dennis' successor is Brian Pink. Brian had a long career in the ABS prior to his appointment as New Zealand Government

Statistician in October 2000. He started his career in the NSW Regional Office before moving to Canberra where his experiences included economic statistics and technical services.

Brian was also Deputy Commonwealth Statistician and Government Statistician for WA from 1987 to 1993. Brian is currently President of the International Association of Official Statisticians and Vice Chair of the OECD Committee of Statistics.




2006 Census Products will be Available on the Web for Free!

The ABS takes pleasure in announcing the first of two scheduled releases of the much anticipated 2006 Census online product suite. All of the Census products to be released on 27 June will be available free on the ABS website at www.abs.gov.au/census. They form only part of a comprehensive range of statistical products that the ABS has developed to meet your information needs.

Two Stage Release of data

Census data are released in two stages. The variables released in first stage are the questions that are easily processed. These are the tick box questions including Sex, Age and Birthplace. Second release data consists of the variables that required a handwritten response and takes more time to process.

QuickStats: 1st Release

 **QuickStats is a summary of the many key Census statistics relating to people, families and their dwellings** and also contains a small description of the statistics within the tables. QuickStats does not include all Census topics but gives you the top five topics and data within a selected area.

The beauty of QuickStats is that it allows you to easily compare results from a selected region within the Australian totals. Summaries are then produced that include topics such as age breakdowns, a selection of birthplaces, languages and religions and also employment information. Quickstats provides data from the smallest geographic area, a Collection District, up to the largest geographic area.

QuickStats is free on the web and available in HTML format.

MapStats: 1st release



MapStats (formerly 'QuickMaps') gives you easy access to 2006 Census data and lets you create detailed thematic maps easily and quickly.

MapStats contain identifiers such as main roads, rivers, airports and area labels to assist you in recognising your selected areas.

You can choose to create maps for any selected area or community and will depict a selection of population, ethnicity, education, family, income, labour force and dwelling characteristics.

MapStats is free on the web; the maps you generate can be exported in either Adobe Acrobat (PDF) or PNG (Portable Network Graphics) formats.

Census Tables: 1st Release



Census Tables is for those people interested in data on a particular geographic area or data on a specific topic. You can compare

social, economic and demographic variables between different areas. Each of the tables available contain the key Census characteristics of people, families and their dwellings. It covers most of the topics on the 2006 Census

form including the new questions on the need for assistance, children ever born, unpaid domestic work, unpaid child care, volunteer work and household internet connection.

Census Tables can assist you in researching, planning and analysing topical issues or geographic areas.

All you need to do is select a geographic area and a topic from a listing then select the table you want to create.

Census Tables is available free on the web; the tables you produce can be exported into an Excel worksheet. You can also save and/or print these files.

More information required?

If the information you require does not appear to be available in the standard product range, please contact an ABS Information Consultant. They can advise you on customised 2006 Census data tailored to suit your specific needs. Simply telephone the ABS National Information and Referral Service on 1300 135 070 to take advantage of this service.

(Did You Know - 314,000 eCensus forms were submitted between 6pm-midnight Census night, that's just over 40% of the total forms submitted!)

**Want more?
... see over page**

Want more? What's still to come. . .

2006 Census Products

Community Profile Series



The Community Profile Series is a way of obtaining a comprehensive

statistical picture of a geographical area. The Community Profile Series allows you to investigate a diverse range of Census topics from six different perspectives. Each perspective - or *profile* - looks at a different population (for example Indigenous Australians or working Australians) or respondent location (where respondents usually live or where they were on Census night). The six profiles, which are outlined below, also include a highly detailed profile called the *Expanded Community Profile* and a *Time Series Profile*. Both of these latter profiles are based on where respondents usually live. When you use Community Census Profiles, all you need to do is select a geographical area and profile, and download the Excel file that appears on your screen.

Basic Community Profile: Place of usual residence (where Census respondents usually live).

Place of Enumeration Profile: Place of enumeration (where Census respondents were on Census night).

Indigenous Profile: Indigenous Australians data, based on place of usual residence.

Time Series Profile: Time series data from 1996, 2001 and 2006 Censuses, based on place of enumeration.

Expanded Community Profile:

A more comprehensive version of the Basic Community Profile, based on place of usual residence.

Working Population Profile:

Australia's working population data, based on Journey to Work Areas.

Profiles will be available for free on the web at abs.gov.au/census.

CDATA Online



CDATA Online combines comprehensive information on

Australian society with dynamic mapping software, providing you with an essential tool for planning and researching more effectively. CDATA Online also lets you view the Census data you require in a way that best suits your needs, through tables, graphs and thematic maps.

CDATA Online gives you access to a state-of-the-art map-based search engine, giving you the flexibility to select and combine geographic areas of interest. You can also pinpoint a geographic landmark and collect data for areas that lie within a radial distance of that landmark. As a result, there are literally thousands of different geographies to choose from.

Whether you're analysing business opportunities or wanting a better understanding of your market you can manipulate the way a table looks by adding and removing Census topics, or by simply rearranging the axes. You can even create a range of different

graphs that allow you to investigate the relationship between two or more Census topics. If you want to create a customised thematic map, all you need to do is select two or more geographies using the map-based search engine and pick a Census topic. For example, the thematic map below investigates educational attainment in the Northern Territory and the Australian Capital Territory.

Socio-Economic Indexes for Areas 2006



The best way to investigate the socio-economic well-being of Australian

communities is to use the Socio-Economic Indexes for Areas (SEIFA 2006). For this product the ABS has combined multiple Census topics - such as income, educational attainment and occupation - to develop indexes that allow for the ranking of areas, providing a method of determining the level of social and economic well-being of a region. These indexes show, for example where the affluent live; where the disadvantaged live; and where the highly skilled and educated live. SEIFA 2006 is invaluable for Government planning, funding allocation, marketing research and determining the location of new business opportunities.

TableBuilder



TableBuilder is an exciting new product that, for the first time in ABS history,

will give you remote access to the complete Census Unit Record file.

TableBuilder is designed for people experienced in using Census data and will enable you to extract and manipulate an unlimited number of Census tables. With Table Builder you can create tables, graphs and thematic maps of Census data.

You will need to discuss with a consultant whether or not

TableBuilder is the best product to meet your information needs.

Table Builder is a subscription only service which costs \$1,320 for access to either the 2001 or 2006 Census data, and \$1,550 for both the 2001 and 2006 Census data. The price of Table Builder includes access to training and ongoing help-line support.

Consultancies – Census Customised Tables

Although there is a large amount of data available free of charge on the ABS website, sometimes

there will be occasions where you will need the assistance of an ABS Information Consultant. These consultants are able to assist you with your customised Census data needs. They will offer expert advice and assistance and ensure you receive a tailored information solution.

Census Customised tables are a fee for service and prices will vary depending on the complexity and size of data tables requested.

Call 1300 135 070 to talk with an ABS Information Consultant about your information needs.

Census Datapacks

Call 1300 135 070 to place your order

The '2006 Datapacks' is a CD-ROM product containing all the 2006 Census Community Profile data and digital boundaries. This product is a practical solution if you require only the Census data and digital boundaries to import into your existing database or analysis system.

'2006 Datapacks' is a priced product. You may need to discuss with a consultant whether or not Census Datapacks is the best product to meet your information needs.

Census Sample File

The 2006 Census Sample File (CSF) is a comprehensive Confidentialised Unit Record File (CURF) of Census variables, containing a small random sample of private households and associated persons, and a small random sample of persons in non-private dwellings.

Produced for people experienced in using Census data, the CSF is used for statistical purposes such as regression analysis and data modelling. You can use this file to specify cross-classified tables for statistical analysis, producing information to better understand the Australian population, explain relationships and structures, and test theories about the population.

You will need to discuss with a consultant whether or not the Census Sample File is the best product to meet your information needs.

Hardcopy publications

The Social Atlas Series – Explore Your City

Order at abs.gov.au/census

Explore your city through the Social Atlas Series.

Have you ever wondered . . .

- Which areas in your city had the greatest change in population between 2001 and 2006?
- Where in your city are the highest percentages of people who are not fluent in English?

The Social Atlas Series answers these questions and more.

The Social Atlas Series contains informative maps and enlightening commentary highlighting the key social characteristics of our capital cities and selected regional centres in each state.

Using a common set of 28 maps, the Social Atlases visually present Census information on the distribution of key characteristics of our

population, such as income, ethnicity, education, families, Internet use and unemployment in an easy to interpret manner. The Social Atlas Series really gives you a birds eye view of your city.

Discover your Census by exploring your city.

Picture of a Nation: The Statistician's Report on the 2006 Census

Order at abs.gov.au/census

The Statistician's Report, last published in 1961, will be reintroduced for the 2006 Census.

The publication provides a comprehensive overview of the 2006 Census, summarising a large volume of Census data and providing extensive written analysis. The Statistician's Report will mainly focus on nation-wide statistics, but will also feature notable statistics in smaller geographies such as the demographic characteristics of minority groups.

The Value of ABS Outpostings

Since early February the ACT Office of the ABS has placed Tim Power at ACT Courts and Tribunals to examine and report on a range of issues looking at making improvements to the quality of the Courts data holdings and making improvements in the Courts management and statistical reporting systems. This project has involved undertaking a number of separate but related investigations into various aspects including:

- Investigations into the known indicators and statistical output requirements of users (including those for internal management reporting);
 - Examination of the indicators, materials and methods that would be useful in producing a monthly management report on the activities of ACT Courts and Tribunals (this information inputs to the annual Report on Government Services);
 - Examination of the information being supplied by ACT Courts for the ACT Department of Justice and Community Safety's Criminal Justice Statistical Profile;
 - Examination of the criminal jurisdiction data items and codes used in the ACT Courts and Tribunals information system and recommendation of a suite of edits to be applied to the data holdings to identify data omissions and errors (this information inputs to the annual ABS Criminal Courts Collection); and
 - Examination of the civil jurisdiction data items and codes used in the ACT Courts and Tribunals information system and recommendations for suitable edits and a range of output indicators and statistics.
- Michael Johnson (Courts Administrator) has indicated that this outposting has been invaluable in providing assistance to ACT Courts and Tribunals in addressing data quality issues and providing advice on the production of timely indicators and statistics.
- An outposted officer is one of the best ways the ABS has to provide statistical support to State and Territory Government agencies. The ABS outposting may be assisting with a particular statistical project or issue over a

short period of 3 - 6 months or may be more strategic in nature and therefore be for a longer term.

An outposting is tailored to suit the needs of the agency into which an ABS officer is placed. Some examples to which an outposting may be applied are:

- Assisting agencies in reviewing their administrative data holdings and turning this information into useful statistical outputs for themselves and other users;
- Encouraging agencies to make greater use of statistical information and tools in their work; and
- Assisting agencies in the development of specific surveys and questionnaire design.

These outpostings assist the ABS in gaining a greater understanding of the working environments of agencies and in building stronger ongoing partnerships with

agencies. Specifically it assists the ABS in identifying possible useful sources of administrative data that could provide a wider range of

sub-State/Territory level data.

The ABS has the capacity to undertake outposting in other agencies and if you are

interested please contact Karen Macdonald on telephone 6252 8914.

Information Consultancy

ABS Information Consultancy is a 'value added' service which gives you access to all the ABS' information including demographic, social, health, environment, international trade and economic survey data. The ABS Consultancy Service can provide you with the information you need, tailored to your time frame and budget.

In only a few months, the second release of 2006 Census data will become available. You may pre-order your customised tables now to avoid possible delays in receiving your data. The Advance Order Service is perfect for those requiring large or complex tables.

To discuss your data requirements with an ABS Information Consultant please contact us via:

Phone: 1300 135 070
Email: client.services@abs.gov.au
au Fax: 1300 135 211

or visit the ABS website at www.abs.gov.au

Mesh blocks – a new way of looking at ABS statistics

As part of its role in maintaining the standard statistical geography for Australia, the ABS has introduced a new small area spatial unit, known as the 'Mesh Block'. Mesh blocks are small physical areas, consisting of around 30-60 dwellings. They generally have obvious physical boundaries, such as roads, paths or rivers, and their boundaries are unlikely to change significantly over time. The ACT will comprise approximately four thousand mesh blocks (there will be about 300,000 mesh blocks Australia-wide).

What makes mesh blocks so useful? Their size, or more precisely, their lack of size! Users will be able to request data for very small geographical areas, provided those areas can be made up by aggregating mesh blocks. Up until now, the smallest area for which the ABS has been able to release data has been the Census Collection District (CCD), which consisted of around 200-300 dwellings. Mesh blocks, being much smaller, allow users greater flexibility when specifying their geographical areas of interest.

Initially, only selected data from the 2006 Census will be made available at the mesh block level, eg. counts of persons or households in a particular mesh block. However, a much wider range of 2006 Census data will be available for aggregates of as few as ten mesh blocks. The ABS expects to release experimental estimates for aggregates of mesh blocks in 2008, so it would then be possible to obtain aggregated Census data for specific user-defined areas within a suburb, or for those mesh blocks within a certain distance of a point on a map.

For more information about mesh blocks or ABS statistical geography in general, contact Michael Toole on 02 6252 6434 or email m.toole@abs.gov.au. To request 2006 Census data for a specific area based on mesh blocks, contact the National Information and Referral Service on 1300 135 070 or email client.services@abs.gov.au to discuss your requirements.

Forthcoming changes to ABS Labour Force Statistics – Composite Estimation

The Labour Force Survey (LFS) collects information from the occupants of a sample of dwellings to estimate the labour market activity of Australia's resident civilian population aged 15 years and over. It is designed primarily to provide estimates of key labour force statistics for the whole of Australia and, secondarily, for each state and territory.

The LFS is a sample survey which collects information each month from a random sample of households across Australia. Estimates of employment and unemployment are derived by weighting the sample data to represent the total civilian population aged 15 years and over.

In June 2007, the ABS will introduce an improved method of estimation for the LFS. The new method, known as composite estimation, is more efficient than the current estimation method. That is, the composite estimator

achieves a given level of standard error at lower cost and respondent load than the current estimator. This is achieved by combining data collected in the previous six months with the current month's data to produce the current month's estimates.

Variations of composite estimation are being used for labour force surveys in several other countries.

The composite estimation method was introduced with the release of May 2007 labour force statistics on 7 June 2007 in

Labour Force, Australia (cat. no. 6202.0). At the same time, the ABS will release revised historical LFS statistics based on the new estimation method, back to April 2001. The resulting discontinuity in labour force series at April 2001 will not be statistically significant.

More information about composite estimation can be found in *Forthcoming Changes to Labour Force Statistics* (cat no. 6292.0), which can be accessed via the ABS website <www.abs.gov.au>

Population Estimates Based on the 2006 Census of Population and Housing

On 5 June 2007, the ABS released preliminary population estimates for Australia, the states and territories based on the results of the 2006 Census of Population and Housing. Previously published estimates dating back to 30 September 2001 were also revised to take account of these new Census-based population estimates.

Rebasing Population Estimates

Rebasing refers to the process by which the ABS uses the most recent Census results to revise all estimates back to, but not including, 30 June in the year of the previous Census. Rebasing ensures that the estimated resident population (ERP) time series for the previous intercensal

period are comparable with the latest estimates. It is applied to population estimates at the national, state/territory, Statistical Local Area (SLA) and Local Government Area (LGA) levels.

After each Census, the ABS uses Census counts by place of usual residence to construct a new base population for 30 June of the Census year, from which to estimate quarterly ERP forward.

Because this new population estimate uses the Census as its main data source, it is said to be 'based' on that Census and is referred to as a population base.

During the rebasing process, the 20 most recent quarterly estimates (i.e. from the September quarter of the previous Census year through to the June quarter of the most recent Census year) are finalised.

Constructing a new population base figure

After obtaining population counts from the most recent Census, the ABS adjusts this figure to show population counts by place of usual residence. This involves

ADDING in those residents who were absent interstate on Census night; and
SUBTRACTING those who were visiting from interstate or overseas on Census night.

The ABS then uses these Census counts by place of usual residence to construct a new base figure for 30 June of the Census year. This involves:

ADJUSTING for net undercount in the Census (using results from the Post Enumeration Survey);
ADDING in the number of Australian residents who were temporarily overseas (RTOs) on Census night (using data on international travellers obtained from the Department of Immigration and Citizenship);
RESOLVING anomalies in Census counts (adjusted for undercount and RTOs) through demographic adjustments; and
BACK-DATING this figure from Census night to 30 June of that year.

Output Plans

The process of finalising population estimates rebased to the 2006 Census will occur in stages, with 'preliminary rebased' and 'final rebased' estimates released.

Australian Demographic Statistics, December quarter 2006 (cat. no. 3101.0), released on 5 June 2007, contains preliminary ERP for Australia, states and territories based on the results of the 2006 Census. Previously published estimates dating back to 30 September 2001 were revised to take account of this new Census based population estimate for 30 June 2006. Final ERP for the quarters September 2001 to June 2006 will be published in *Australian Demographic Statistics, December quarter 2007* (cat. no. 3101.0) to be released on 5 June 2008.

Preliminary rebased estimates for SLAs and LGAs will be published in late July 2007 in *Regional Population Growth, Australia, 1996-2006* (cat. no. 3218.0), with final rebased estimates published in July/August 2008.

Preliminary rebased estimates of the Australian Aboriginal and Torres Strait Islander population at 30 June 2006 will be published in *Population Distribution Aboriginal and Torres Strait Islander Australians, 2006* (cat. no. 4705.0) in August 2007. Final rebased estimates for 30 June 2006 will be published in July/August 2008.

An update of the *Information Paper: Measuring Net Undercount in the 2006 Population Census* (cat. no. 2940.0.55.001) was released on 7 May 2007. The *Information Paper: Census of Population and Housing - Undercount* (cat. no. 2940.0) was released on 5 June 2007.

Further updates on upcoming

releases of rebased population estimates will be announced in future issues of *Australian Demographic Statistics* (cat. no. 3101.0).

Further Information

The September quarter 2006 issue of *Australian Demographic Statistics* (cat. no. 3101.0) contains a feature article, 'Rebasing Australia's Population Estimates Using the 2006 Census of Population and Housing', which provides more information about the rebasing process and changes introduced in the 2006 rebasing cycle.

The feature article 'Preliminary rebasing of Australia's population estimates using the 2006 Census of Population and Housing' in the December quarter 2006 issue of *Australian Demographic Statistics* (cat. no. 3101.0) provides details on how preliminary rebased ERP for 30 June 2006 was calculated.

Expected Major Annual & Irregular Releases

GENERAL

1329.0.55.001

Vineyards Estimates, Australia, Preliminary, 2006-07 (October)

1259.0.30.001

Australian Standard Geographical Classification (ASGC) Digital Boundaries (Intercensal), Australia on CD-ROM, 2007 (July)

CENSUS OF POPULATION AND HOUSING

2905.0

Statistical Geography: Volume 2 - Census Geographic Areas, 2006 (July)

2905.0.55.001

ABS Postal Area Concordances

2923.0.30.001

Census of Population and Housing: Census Geographic Areas Digital Boundaries, Australia, 2006 (July)

DEMOGRAPHY

3218.0

Regional Population Growth, Australia, 1996 to 2006 (July)

3306.0.55.001

Marriages, Australia, 2006 (October)

SOCIAL

4102.0

Australian Social Trends, 2007 (July)

4130.0.55.001

Housing Occupancy and Costs, Australia, 2005-06 (October)

4146.0

Improving Statistics on Older Persons: An Information Development Plan

4150.0

Time Use Survey: User Guide, 2006 (October)

4153.0

How Australians Use Their Time, 2006 (October)

4159.8.55.001

General Social Survey, Australia Capital Territory, 2006 (June)

4172.0

Arts and Culture in Australia: A Statistical Overview, 2007 (June)

4183.0

Cultural Funding by Government, Australia, 2005-06 (August)

4228.0

Adult Literacy and Life Skills Survey, Summary of Results, Australia, July to Dec 2006 (October)

4228.0.55.002

Adult Literacy and Lifeskills Survey, Australia: User Guide, 2006 (October)

4234.0.55.001

Information Paper: Measuring Learning in Australia: A Profile of Participation and Outcomes (June)

4307.0.55.001

Apparent Consumption of Alcohol, Australia, 2005-06 (June)

4611.0

Environmental Expenditure, Local Government, Australia, 2005-06 (August)

4618.0

Water Use on Australian Farms, 2005-06 (July)

4705.0

Population Distribution, Aboriginal and Torres Strait Islander Australians, 2006 (August)

NATIONAL ACCOUNTS INTERNATIONAL TRADE AND FINANCE

5352.0

International Investment Position, Australia:
Supplementary Country Statistics, 2006 (July)

LABOUR FORCE

6225.0

Information Paper: Persons in Their Own
Business, Experimental Estimates for Small Areas,
1996-97 to 2003-04 (August)

6278.0

Labour Force Characteristics of Aboriginal and
Torres Strait Islander Australians, Experimental
Estimates from the Labour Force Survey, 2006 (June)

6401.0.55.002

Information paper: Consumer Price Index with
Reserve Bank of Australia Consumer Price
Measures, 2007 (July)

6461.0

Australian Consumer Price Index: Concepts,
Sources and Methods, 2006 (July)

6503.0

Survey of Income and Housing: User Guide,
2005-06 (August)

AGRICULTURE

7106.0

Australian farming in Brief, 2007 (July))

SECONDARY INCOME AND DISTRIBUTION

8104.0

Research and Experimental Development,
Businesses, Australia, 2005-06 (August)

8127.0

Characteristics of Small Business, Australia, 2005
(June)

TRANSPORT

9208.0

Survey of Motor Vehicle Use, Australia, 01 Nov
2005 to 31 Oct 2006 (October)

9503.0.55.001

Tourism Region Maps and Concordance
Files(June)

The above listing shows a selection of ABS
publications expected to be released over the
coming quarter. The expected month of release is
shown in brackets. Release dates may vary from
those shown. Current publications and other
products released by the ABS are listed on the
ABS web site <www.abs.gov.au>. The web site
also provides daily release information.

DETACH AND RETURN

Please circle the relevant response below and update any amendments to details:

☐ YES, I would prefer to receive ABSTRACT electronically.

My email address

☐ YES, someone else I know would like to receive ABSTRACT.

☐ YES, my address details have changed.

New contact details:

Name _____

Position _____

Organisation _____

Postal Address _____

Postcode _____

Phone _____

Email _____

☐ YES, Please remove my name from the ABSTRACT distribution list

RETURN TO:

Tina Ryan, ACT ABS Office, Locked Bag 10, Belconnen, ACT 2616

Phone (02) 6252 8904

Fax (02) 6247 2389

email: tina.ryan@abs.gov.au

Entry Points to the ABS ACT Office

Office Hours: 9am to 4.30pm Mon to Fri

Level 5

33-35 Ainslie Avenue

Canberra City

Ph: (02) 6252 8900

Fax: (02) 6247 2389

Postal address:

ACT ABS Office

Locked Bag 10

BELCONNEN ACT 2616

CPI Information Line

1902 981 074

(75c per minute)

Web site:

www.abs.gov.au

National Information and Referral Service

Telephone 1300 135 070

Fax 1300 135 211

Email client.services@abs.gov.au

ABS ACT regional contacts:

Regional Director: Karen Macdonald 02 6252 8914

Assistant Regional Directors: Rhonda de Vos 02 6252 8909
and Brent Perkins 02 6252 8911

Manager Information Consultancy:

Steve Glaznieks 02 6252 8924

Census Liaison Officer: Gemma Wood 02 6252 8903

© Commonwealth of Australia 2007

This work is copyright. Apart from any use as permitted under the Copyright Act 1968, no part may be reproduced by any process without prior written permission from the Commonwealth. Requests and inquiries concerning reproduction and rights in this publication should be addressed to The Manager, Intermediary Management, Australian Bureau of Statistics, Locked Bag 10, Belconnen ACT 2616, by telephone (02) 6252 6998, fax (02) 6252 7102, or email [<intermediary.management@abs.gov.au>](mailto:intermediary.management@abs.gov.au).

In all cases the ABS must be acknowledged as the source when reproducing or quoting any part of an ABS publication or other product.

STATISTICAL TRAINING COURSES AVAILABLE IN CANBERRA 2007

Each ABS office offers practical, informative and relevant training to help you develop your statistical skills. These courses can also be tailored to suit your needs or additional programs can be developed as required. The ABS is pleased to offer the following courses in Canberra in 2007:

ANALYSING SURVEY DATA MADE SIMPLE

Overview

This two-day computer-based course develops practical skills in basic statistical and graphical data analysis techniques using Microsoft Excel. It aims to equip participants with the skills to:

- identify the steps involved in data analysis;
- summarise and display survey data in graphical and tabular form;
- find simple relationships in survey data; and
- test for statistically significant differences between survey results.

Is this course for me?

This course is designed for people with limited training and exposure to statistical analysis who need to learn how to analyse and describe data that have been collected in surveys. A mathematical background is beneficial but not essential. Previous experience using spreadsheets is recommended.

Dates 21 - 22 June 2007
29 - 30 August 2007
29 - 30 October 2007

Cost \$750 (inc. GST) per person

BASIC SURVEY DESIGN

Overview

This two-day course aims to provide a grounding in all facets of sample survey development. Topics include developing survey objectives, advantages and disadvantages of various collection methodologies, questionnaire design, data processing and reporting of results.

Participants will learn how to:

- formulate survey objectives and prepare project briefs;
- identify issues associated with survey management and design;
- identify appropriate survey techniques for data collection; and
- understand the overall survey process

** Note that this course does not cover questionnaire design in any depth. Please see Principles of Questionnaire Design instead.*

Is this course for me?

This course would be useful for anyone who conducts their own surveys, or who needs a broad understanding of the issues associated with the survey process.

Dates 16 - 17 October 2007

Cost \$750 (inc. GST) per person

MAKING QUALITY INFORMED DECISIONS

Overview

Need to introduce some quality into your statistical decision making? This one-day course introduces the concept of 'holistic quality' through the use of a data quality framework. The framework ensures that users of statistics are able to assess whether the statistics are fit for their intended use. This course will provide participants with an increased understanding of:

- how to set up a quality framework;
- risk management in making statistical decisions;
- how to assess datasets in the context of data need; and
- using information on data

quality to make better informed decisions.

Is this course for me?

This course would be useful for anyone who uses statistics in decision making, or is involved in producing statistics and wants to ensure that statistics are used appropriately.

Dates 24 July 2007
20 September 2007

Cost \$450 (inc. GST) per person

PRINCIPLES OF QUESTIONNAIRE DESIGN

Overview

This two-day course aims to enable participants to understand and apply the basic techniques used in developing a survey questionnaire. The course will include facilitated exercises to give participants an understanding of how to design and evaluate a questionnaire. The course content covers:

- defining survey objectives;
- developing content based on survey objectives;
- developing survey questions;
- developing instructions to accompany questions;
- arranging questions in a logical and orderly way;
- testing the questionnaire; and
- questionnaire layout.

Is this course for me?

This course would be useful for anyone who needs to design a questionnaire that will collect information accurately and concisely.

Dates 12 - 13 November 2007

Cost \$750 (inc. GST) per person

TURNING DATA INTO INFORMATION

Overview

This two-day course is intended to provide skills in interpreting, communicating and displaying data clearly and effectively. Participants will gain skills in transforming data into meaningful written information, particularly in respect to social policy issues. At the completion of this course participants will be able to:

- understand how the collection and compilation of data affects their usefulness, quality and relevance;

- communicate results and prepare written reports;
- construct good tables and graphs; and
- recognise possible pitfalls in analysis.

Is this course for me?

This course will be most beneficial to people who need to use data to produce reports or social commentary, or people who are involved with monitoring and evaluation in a social context.

Dates 26 - 27 September 2007
27 - 28 November 2007

Cost \$750 (inc. GST) per person

FURTHER INFORMATION

For more information about course content, available dates for these courses in other capital cities around Australia, or details of how we may be able to tailor or offer a course to meet your specific needs:

E-mail: training@abs.gov.au

Or visit www.abs.gov.au under 'Services we provide' then 'ABS Training', for further information about external training with ABS

CANBERRA 2007 COURSE REGISTRATION FORM

Please tick below the course(s) you wish to attend.

Analysing Survey Data Made Simple

- ☐ 21 - 22 June 2007
☐ 29 - 30 August 2007
☐ 29 - 30 October 2007

Turning Data Into Information

- ☐ 26 - 27 September 2007
☐ 27 - 28 November 2007

Basic Survey Design

- ☐ 16 - 17 October 2007

Principles of Questionnaire Design

- ☐ 12 - 13 November 2007

Making Quality Informed Decisions

- ☐ 24 July 2007
☐ 20 September 2007

Name:

Department/Organisation:

Section/Branch:

Postal Address:

Phone: **Fax:**

E-mail:

Please send invoice to: ☐ Participant (details above) ☐ Other (Please provide details below)

.....

Payment Details

All course attendance will be invoiced upon completion of the nominated course. Costs include all course materials, a light lunch as well as morning and afternoon teas.

1 day course \$450 (inc. GST)

2 day course \$750 (inc. GST)

Cancellations, in writing, will be accepted 5 working days prior to the course. After this a cancellation fee of 50% of the course fee will be charged.

Non-attendance without written notification of cancellation will result in the full fee being charged.

Substitutions are allowed at any time.

REGISTER TODAY by returning this completed form to:

Post: External Training Coordinator
Client, Statistical & Other Services
Australian Bureau of Statistics
PO Box 181 Civic Square ACT 2608

E-mail: gemma.wood@abs.gov.au

Phone: (02) 6252 8903 for further information

Fax: (02) 6247 2389

* Your booking will be confirmed upon receipt of your registration form. If you have not received confirmation of enrolment within 2 working days, please call (02) 6252 8900.